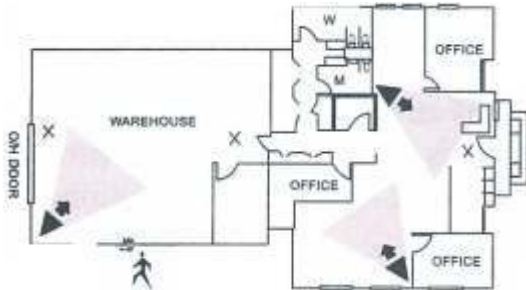




SONITROL[®]
VERIFIED ELECTRONIC SECURITY

If it's not **VERIFIED**, it's simply **guessing!**

CONVENTIONAL UNVERIFIED MOTION DETECTION SYSTEM



- A.** Most conventional systems cover only a selected portion of your building and from limited points of entry.
- B.** Conventional motion systems activate after someone has already broken in and they are inside.
- C.** Most conventional monitoring personnel call the facility first, trying to confirm the break in, then call either the police or the company's responder at home.
- D.** Most conventional systems use an audible alarm which tells intruders when they need to leave so they don't get caught.
- E.** Conventional systems don't know the difference between a real alarm and a false one. Often, they call you at home and ask **you** what **they** should do.
- F.** Conventional systems have a false alarm rate of over 95% and no false alarm guarantee.
- G.** Conventional alarms do not qualify for "verified" police dispatches.

VERIFIED SONITROL SECURITY ACTIVE AUDIO SYSTEM



- A.** Sonitrol has **complete** coverage from **any** point of entry.
- B.** Sonitrol audio systems can detect someone while they are trying to break in, so dispatch can start while they are on the outside.
- C.** Sonitrol operators confirm the break in, call the police and stay in contact to help in the apprehension. This results in a quicker police response.
- D.** Sonitrol uses a silent alarm so intruders don't know they've been detected, giving Sonitrol the highest documented apprehension rate.
- E.** If a Sonitrol system is activated by a normal noise, Sonitrol can reset the system from our Central Station.
- F.** Sonitrol has the lowest number of false alarms and a **false alarm guarantee**.
- G.** Sonitrol satisfies all verified police dispatch policies.